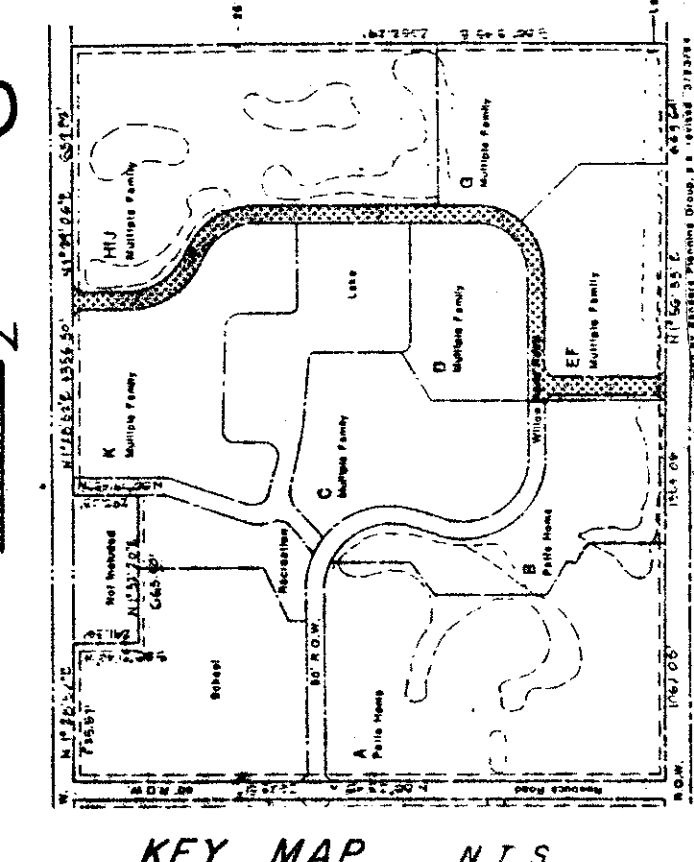
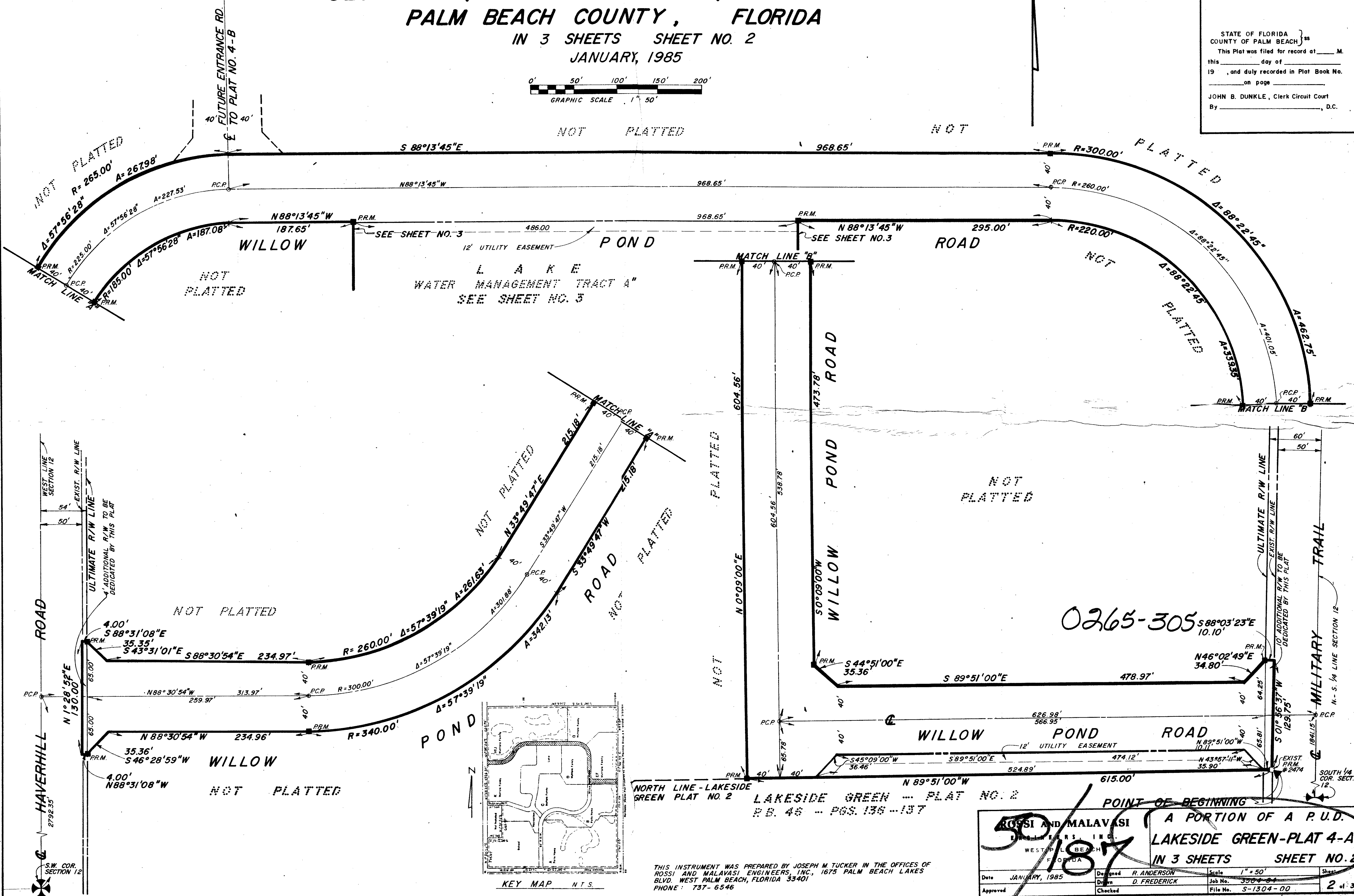
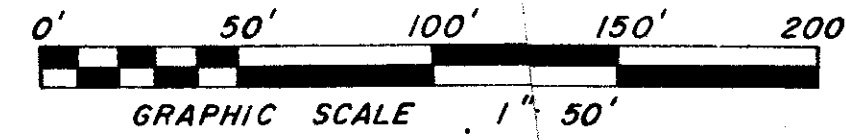


DRAWING NUMBER  
50/187

A PORTION OF A P.U.D.  
**LAKESIDE GREEN-PLAT NO. 4-A**  
SECTION 12, TOWNSHIP 43 SOUTH, RANGE 42 EAST  
PALM BEACH COUNTY, FLORIDA  
IN 3 SHEETS SHEET NO. 2  
JANUARY, 1985

187

STATE OF FLORIDA }  
COUNTY OF PALM BEACH } ss  
This Plat was filed for record at \_\_\_\_\_ M.  
this \_\_\_\_\_ day of \_\_\_\_\_  
19 \_\_\_\_\_, and duly recorded in Plat Book No. \_\_\_\_\_  
on page \_\_\_\_\_  
JOHN B. DUNKLE, Clerk Circuit Court  
By \_\_\_\_\_, D.C.



0265-305

NORTH LINE - LAKESIDE GREEN PLAT NO. 2  
LAKESIDE GREEN - PLAT NO. 2  
P.B. 45 - PGS. 136 - 137

ROSSI AND MALAVASI ENGINEERS INC.  
WEST PALM BEACH, FLORIDA

A PORTION OF A P.U.D.  
**LAKESIDE GREEN-PLAT 4-A**  
IN 3 SHEETS SHEET NO. 2

Date	JANUARY, 1985	Designed	R. ANDERSON	Scale	1" = 50'	Sheet	2 of 3
Approved		Drawn	D. FREDERICK	Job No.	3204-64		
		Checked		File No.	S-1304-00		

DRAWING NUMBER

DRAWING NUMBER

DRAWING NUMBER

PLAN HOLD CORPORATION • IRVINE, CALIFORNIA  
REORDER BY NUMBER 07548